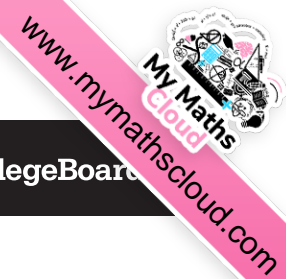


2019

AP[®]

CollegeBoard



AP[®] Calculus BC

Free-Response Questions

© 2019 The College Board. College Board, Advanced Placement, AP, AP Central, and the acorn logo are registered trademarks of the College Board. Visit the College Board on the web: collegeboard.org.

AP Central is the official online home for the AP Program: apcentral.collegeboard.org.

2019 AP[®] CALCULUS BC FREE-RESPONSE QUESTIONS



CALCULUS BC

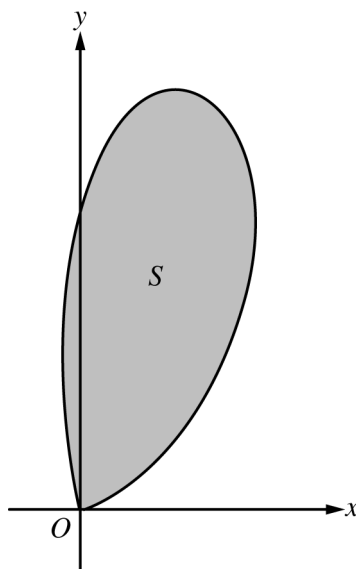
SECTION II, Part A

Time—30 minutes

Number of questions—2

A GRAPHING CALCULATOR IS REQUIRED FOR THESE QUESTIONS.

1. Fish enter a lake at a rate modeled by the function E given by $E(t) = 20 + 15 \sin\left(\frac{\pi t}{6}\right)$. Fish leave the lake at a rate modeled by the function L given by $L(t) = 4 + 2^{0.1t^2}$. Both $E(t)$ and $L(t)$ are measured in fish per hour, and t is measured in hours since midnight ($t = 0$).
- (a) How many fish enter the lake over the 5-hour period from midnight ($t = 0$) to 5 A.M. ($t = 5$)? Give your answer to the nearest whole number.
- (b) What is the average number of fish that leave the lake per hour over the 5-hour period from midnight ($t = 0$) to 5 A.M. ($t = 5$)?
- (c) At what time t , for $0 \leq t \leq 8$, is the greatest number of fish in the lake? Justify your answer.
- (d) Is the rate of change in the number of fish in the lake increasing or decreasing at 5 A.M. ($t = 5$)? Explain your reasoning.
-



2. Let S be the region bounded by the graph of the polar curve $r(\theta) = 3\sqrt{\theta} \sin(\theta^2)$ for $0 \leq \theta \leq \sqrt{\pi}$, as shown in the figure above.
- (a) Find the area of S .
- (b) What is the average distance from the origin to a point on the polar curve $r(\theta) = 3\sqrt{\theta} \sin(\theta^2)$ for $0 \leq \theta \leq \sqrt{\pi}$?
- (c) There is a line through the origin with positive slope m that divides the region S into two regions with equal areas. Write, but do not solve, an equation involving one or more integrals whose solution gives the value of m .
- (d) For $k > 0$, let $A(k)$ be the area of the portion of region S that is also inside the circle $r = k \cos \theta$. Find $\lim_{k \rightarrow \infty} A(k)$.

END OF PART A OF SECTION II

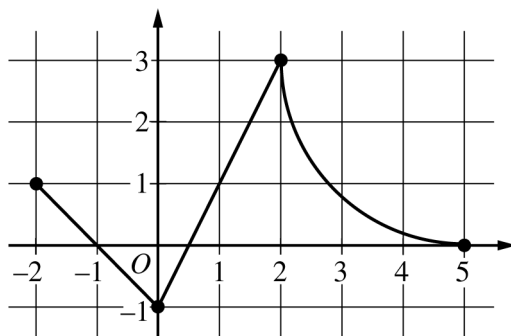
2019 AP[®] CALCULUS BC FREE-RESPONSE QUESTIONS

CALCULUS BC
SECTION II, Part B

Time—1 hour

Number of questions—4

NO CALCULATOR IS ALLOWED FOR THESE QUESTIONS.



Graph of f

3. The continuous function f is defined on the closed interval $-6 \leq x \leq 5$. The figure above shows a portion of the graph of f , consisting of two line segments and a quarter of a circle centered at the point $(5, 3)$. It is known that the point $(3, 3 - \sqrt{5})$ is on the graph of f .

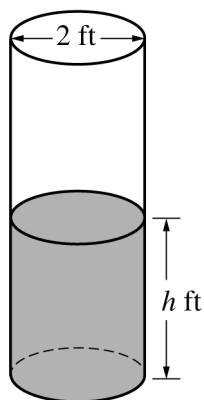
(a) If $\int_{-6}^5 f(x) dx = 7$, find the value of $\int_{-6}^{-2} f(x) dx$. Show the work that leads to your answer.

(b) Evaluate $\int_3^5 (2f'(x) + 4) dx$.

(c) The function g is given by $g(x) = \int_{-2}^x f(t) dt$. Find the absolute maximum value of g on the interval $-2 \leq x \leq 5$. Justify your answer.

(d) Find $\lim_{x \rightarrow 1} \frac{10^x - 3f'(x)}{f(x) - \arctan x}$.

2019 AP[®] CALCULUS BC FREE-RESPONSE QUESTIONS



4. A cylindrical barrel with a diameter of 2 feet contains collected rainwater, as shown in the figure above. The water drains out through a valve (not shown) at the bottom of the barrel. The rate of change of the height h of the water in the barrel with respect to time t is modeled by $\frac{dh}{dt} = -\frac{1}{10}\sqrt{h}$, where h is measured in feet and t is measured in seconds. (The volume V of a cylinder with radius r and height h is $V = \pi r^2 h$.)
- (a) Find the rate of change of the volume of water in the barrel with respect to time when the height of the water is 4 feet. Indicate units of measure.
- (b) When the height of the water is 3 feet, is the rate of change of the height of the water with respect to time increasing or decreasing? Explain your reasoning.
- (c) At time $t = 0$ seconds, the height of the water is 5 feet. Use separation of variables to find an expression for h in terms of t .
-

2019 AP[®] CALCULUS BC FREE-RESPONSE QUESTIONS



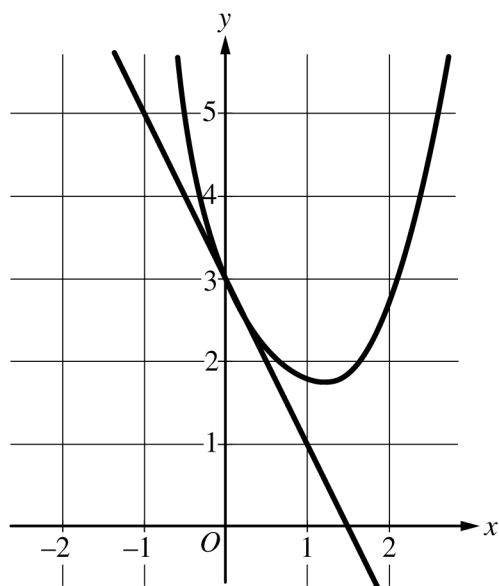
5. Consider the family of functions $f(x) = \frac{1}{x^2 - 2x + k}$, where k is a constant.

(a) Find the value of k , for $k > 0$, such that the slope of the line tangent to the graph of f at $x = 0$ equals 6.

(b) For $k = -8$, find the value of $\int_0^1 f(x) dx$.

(c) For $k = 1$, find the value of $\int_0^2 f(x) dx$ or show that it diverges.

2019 AP[®] CALCULUS BC FREE-RESPONSE QUESTIONS



n	$f^{(n)}(0)$
2	3
3	$-\frac{23}{2}$
4	54

6. A function f has derivatives of all orders for all real numbers x . A portion of the graph of f is shown above, along with the line tangent to the graph of f at $x = 0$. Selected derivatives of f at $x = 0$ are given in the table above.

(a) Write the third-degree Taylor polynomial for f about $x = 0$.

(b) Write the first three nonzero terms of the Maclaurin series for e^x . Write the second-degree Taylor polynomial for $e^x f(x)$ about $x = 0$.

(c) Let h be the function defined by $h(x) = \int_0^x f(t) dt$. Use the Taylor polynomial found in part (a) to find an approximation for $h(1)$.

(d) It is known that the Maclaurin series for h converges to $h(x)$ for all real numbers x . It is also known that the individual terms of the series for $h(1)$ alternate in sign and decrease in absolute value to 0. Use the alternating series error bound to show that the approximation found in part (c) differs from $h(1)$ by at most 0.45.

STOP
END OF EXAM