



AP[®] Calculus BC

2016 Free-Response Questions

© 2016 The College Board. College Board, Advanced Placement Program, AP, AP Central, and the acorn logo are registered trademarks of the College Board.

Visit the College Board on the Web: www.collegeboard.org.

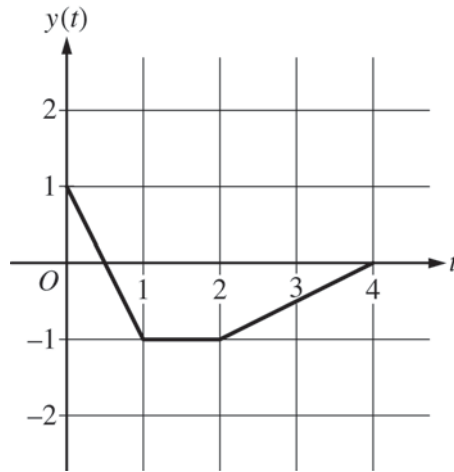
AP Central is the official online home for the AP Program: apcentral.collegeboard.org.

2016 AP[®] CALCULUS BC FREE-RESPONSE QUESTIONS**CALCULUS BC
SECTION II, Part A****Time—30 minutes****Number of problems—2****A graphing calculator is required for these problems.**

t (hours)	0	1	3	6	8
$R(t)$ (liters / hour)	1340	1190	950	740	700

1. Water is pumped into a tank at a rate modeled by $W(t) = 2000e^{-t^2/20}$ liters per hour for $0 \leq t \leq 8$, where t is measured in hours. Water is removed from the tank at a rate modeled by $R(t)$ liters per hour, where R is differentiable and decreasing on $0 \leq t \leq 8$. Selected values of $R(t)$ are shown in the table above. At time $t = 0$, there are 50,000 liters of water in the tank.
- (a) Estimate $R'(2)$. Show the work that leads to your answer. Indicate units of measure.
- (b) Use a left Riemann sum with the four subintervals indicated by the table to estimate the total amount of water removed from the tank during the 8 hours. Is this an overestimate or an underestimate of the total amount of water removed? Give a reason for your answer.
- (c) Use your answer from part (b) to find an estimate of the total amount of water in the tank, to the nearest liter, at the end of 8 hours.
- (d) For $0 \leq t \leq 8$, is there a time t when the rate at which water is pumped into the tank is the same as the rate at which water is removed from the tank? Explain why or why not.
-

2016 AP[®] CALCULUS BC FREE-RESPONSE QUESTIONS



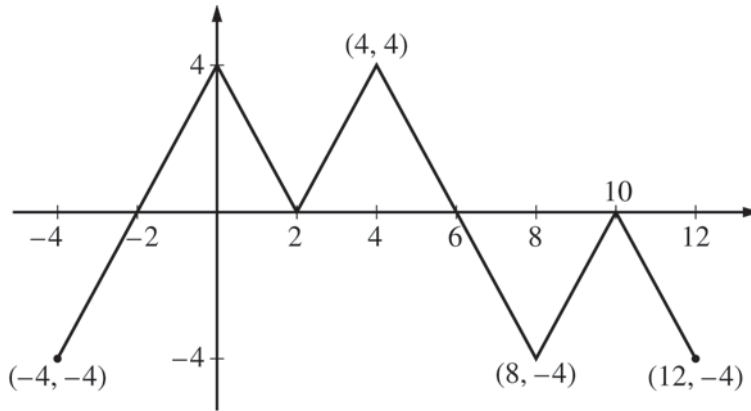
2. At time t , the position of a particle moving in the xy -plane is given by the parametric functions $(x(t), y(t))$, where $\frac{dx}{dt} = t^2 + \sin(3t^2)$. The graph of y , consisting of three line segments, is shown in the figure above. At $t = 0$, the particle is at position $(5, 1)$.
- (a) Find the position of the particle at $t = 3$.
 - (b) Find the slope of the line tangent to the path of the particle at $t = 3$.
 - (c) Find the speed of the particle at $t = 3$.
 - (d) Find the total distance traveled by the particle from $t = 0$ to $t = 2$.
-

END OF PART A OF SECTION II

2016 AP[®] CALCULUS BC FREE-RESPONSE QUESTIONS

CALCULUS BC
SECTION II, Part B
Time—60 minutes
Number of problems—4

No calculator is allowed for these problems.



Graph of f

3. The figure above shows the graph of the piecewise-linear function f . For $-4 \leq x \leq 12$, the function g is defined by $g(x) = \int_2^x f(t) dt$.
- (a) Does g have a relative minimum, a relative maximum, or neither at $x = 10$? Justify your answer.
 - (b) Does the graph of g have a point of inflection at $x = 4$? Justify your answer.
 - (c) Find the absolute minimum value and the absolute maximum value of g on the interval $-4 \leq x \leq 12$. Justify your answers.
 - (d) For $-4 \leq x \leq 12$, find all intervals for which $g(x) \leq 0$.
-

2016 AP[®] CALCULUS BC FREE-RESPONSE QUESTIONS



4. Consider the differential equation $\frac{dy}{dx} = x^2 - \frac{1}{2}y$.

(a) Find $\frac{d^2y}{dx^2}$ in terms of x and y .

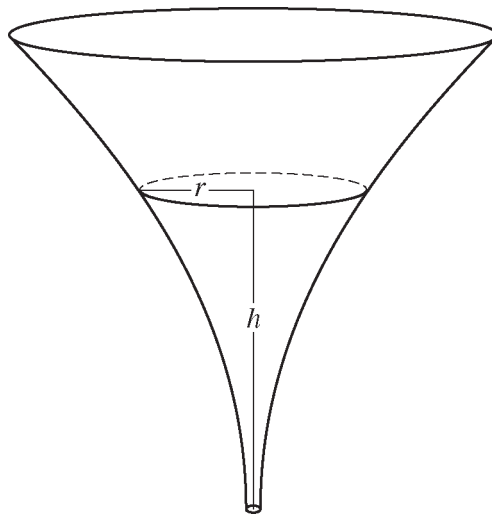
(b) Let $y = f(x)$ be the particular solution to the given differential equation whose graph passes through the point $(-2, 8)$. Does the graph of f have a relative minimum, a relative maximum, or neither at the point $(-2, 8)$? Justify your answer.

(c) Let $y = g(x)$ be the particular solution to the given differential equation with $g(-1) = 2$. Find

$\lim_{x \rightarrow -1} \left(\frac{g(x) - 2}{3(x + 1)^2} \right)$. Show the work that leads to your answer.

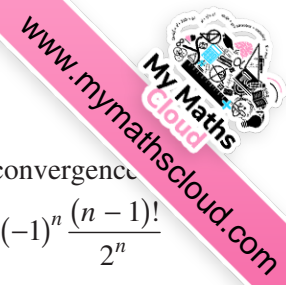
(d) Let $y = h(x)$ be the particular solution to the given differential equation with $h(0) = 2$. Use Euler's method, starting at $x = 0$ with two steps of equal size, to approximate $h(1)$.

2016 AP[®] CALCULUS BC FREE-RESPONSE QUESTIONS



5. The inside of a funnel of height 10 inches has circular cross sections, as shown in the figure above. At height h , the radius of the funnel is given by $r = \frac{1}{20}(3 + h^2)$, where $0 \leq h \leq 10$. The units of r and h are inches.
- (a) Find the average value of the radius of the funnel.
 - (b) Find the volume of the funnel.
 - (c) The funnel contains liquid that is draining from the bottom. At the instant when the height of the liquid is $h = 3$ inches, the radius of the surface of the liquid is decreasing at a rate of $\frac{1}{5}$ inch per second. At this instant, what is the rate of change of the height of the liquid with respect to time?
-

2016 AP[®] CALCULUS BC FREE-RESPONSE QUESTIONS



6. The function f has a Taylor series about $x = 1$ that converges to $f(x)$ for all x in the interval of convergence. It is known that $f(1) = 1$, $f'(1) = -\frac{1}{2}$, and the n th derivative of f at $x = 1$ is given by $f^{(n)}(1) = (-1)^n \frac{(n-1)!}{2^n}$ for $n \geq 2$.
- (a) Write the first four nonzero terms and the general term of the Taylor series for f about $x = 1$.
 - (b) The Taylor series for f about $x = 1$ has a radius of convergence of 2. Find the interval of convergence. Show the work that leads to your answer.
 - (c) The Taylor series for f about $x = 1$ can be used to represent $f(1.2)$ as an alternating series. Use the first three nonzero terms of the alternating series to approximate $f(1.2)$.
 - (d) Show that the approximation found in part (c) is within 0.001 of the exact value of $f(1.2)$.
-

STOP
END OF EXAM